

Cornerstone Mapping Asset Management

 **Cornerstone
mapping** pty ltd

 **METAMAPP3D**



mapping | gis | mobile development | web development | augmented reality
3d models | 3d maps | advanced online maps | 360° virtual tours

Fig 1 : Lidar Scan of Open Office



Scanning / Measuring (on-site)

1. During our site visit, we measure and carry out scans using Lidar.
2. We also collect geopoints or polylines and attribute data related to visible services and equipment. These will be added to a database which will be linked to the Asset Management System.
3. 360° Photos are also captured during this phase of the project.

Digital Twin & Building Information Layout

1. We process the lidar scans and recreate an accurate Digital Twin of the property. These are converted to Building Information Layouts.
2. Building Information Layouts usually include the complete floor layout, ceiling type and height, lighting, sprinklers, fire equipment, air conditioning, toilets, sinks, wash basins, electrical distribution boxes, shop front details, and other visible details.
3. Digital Twins are also used to create 3D models or as a base to design office layouts around potential tenant needs

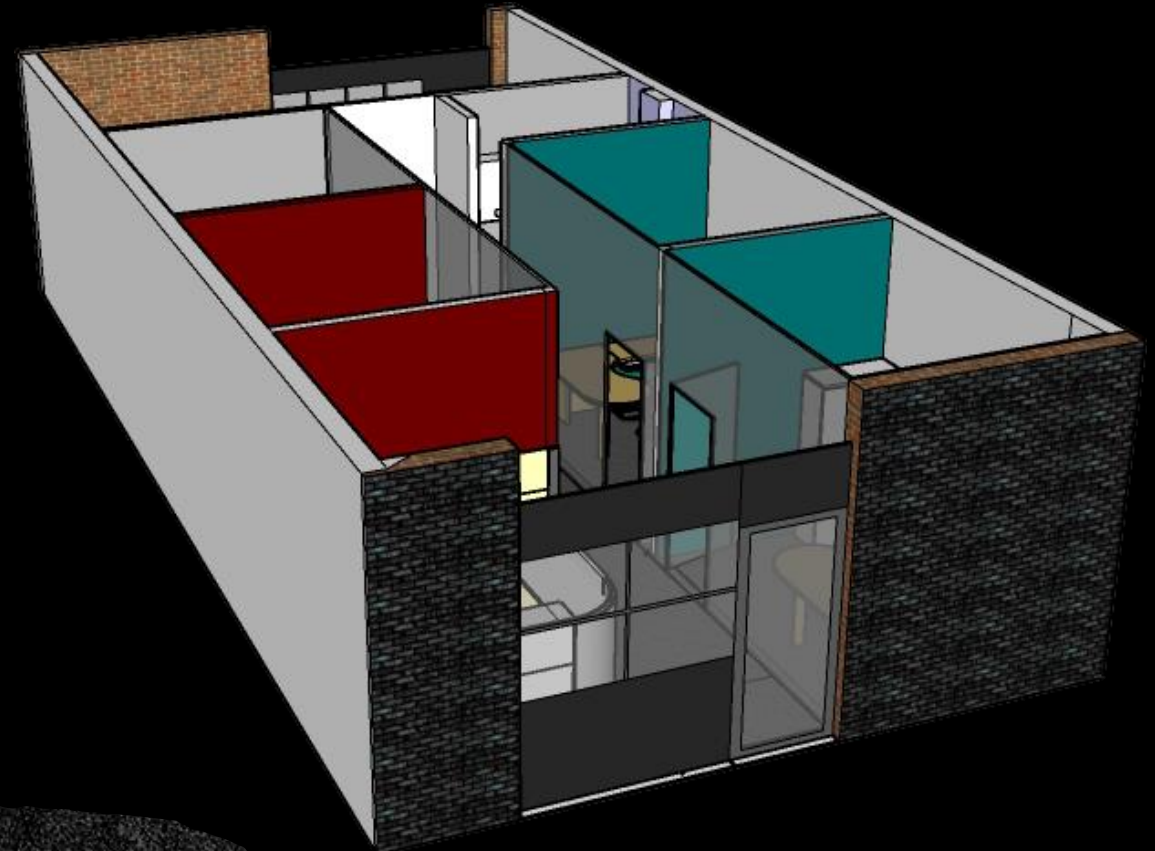
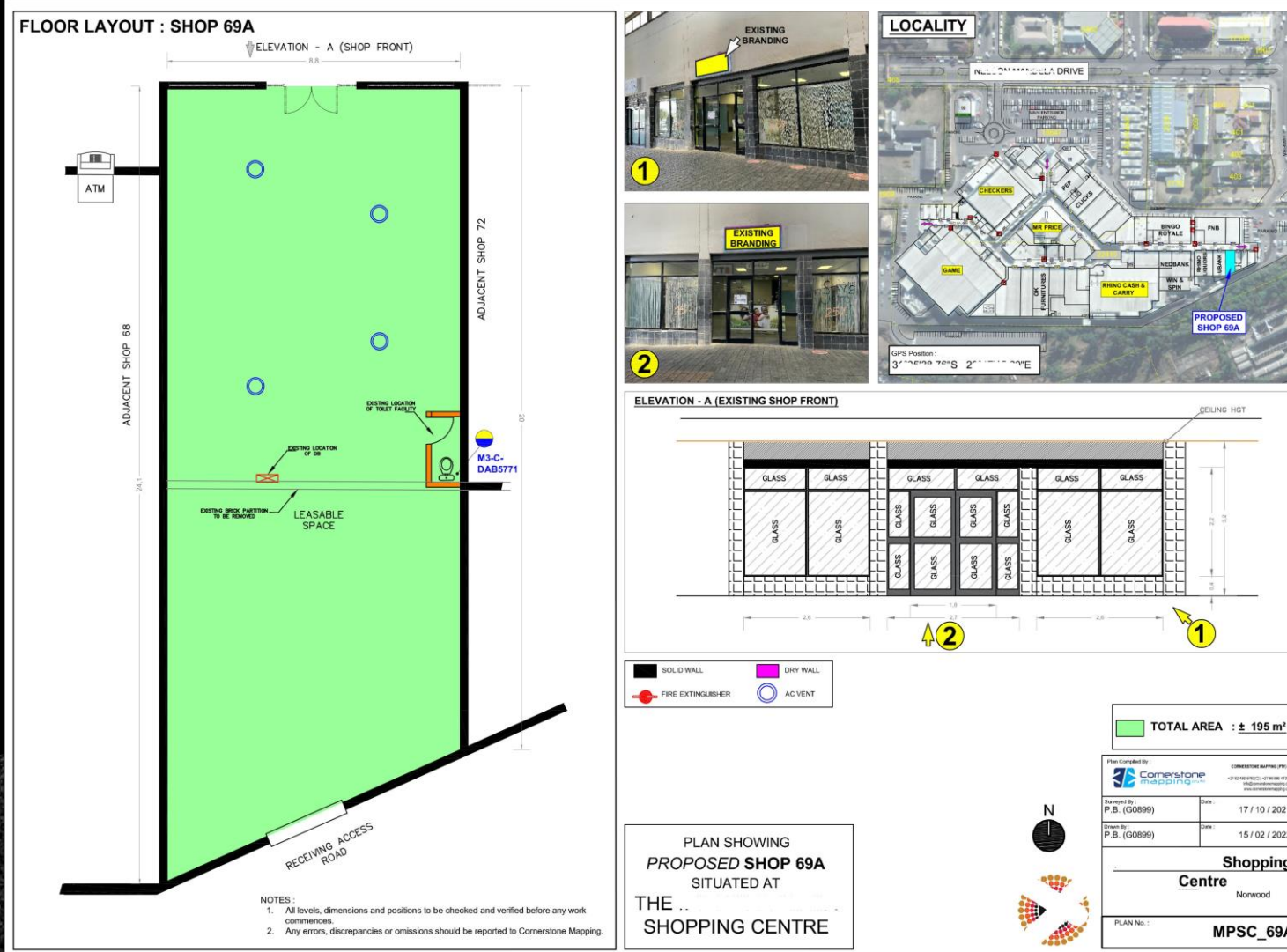


Fig 2 : Digital Twin with Proposed
Office Layout - Click for Youtube Demo Video

Lease Plans



1. We compile Lease Plans showing the existing, accurate floor layout, leased area, dimensions, tenant details, location of leased space in relation to the entire building or mall or surrounding buildings.
2. Our Lease Plans usually contain the Shop Front Elevation and/or photos taken from various angles.

Fig 3 : Lease Plan Example

360° Virtual Tour

1. We compile full 360° Virtual Tours of the Malls, Industrial and Commercial sites and individual spaces.
2. These tours can be uploaded and hosted as stand-alone tours, as part of our Asset Management System package or as part of our Property Showcase website.
3. Access to these tours can be open to the public or granted via secure login.



*Click on the Figures to view video examples
on Youtube*

Fig 4-5 : Example 360° Tour Videos

Web Map

1. All data, points, polylines and attributes collected on-site, as well as the floor layouts are loaded as individual layers into a custom-built Web Map.
2. Data is live fed into the map from a database on the back end
3. Layers can be turned on and off by clicking radio buttons.
4. Data can be searched or filtered by attribute. (e.g Searching for Vacant Spaces or a certain size range)
5. Popup boxes display relevant information on clicking a property on the map.
6. The Web Map and all its features are completely mobile friendly.

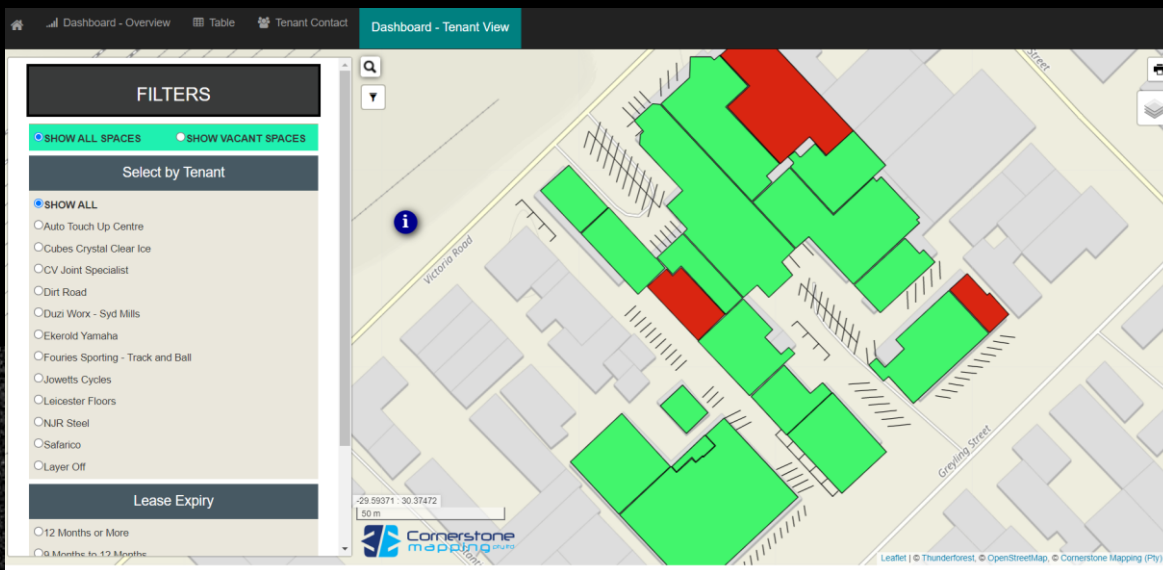
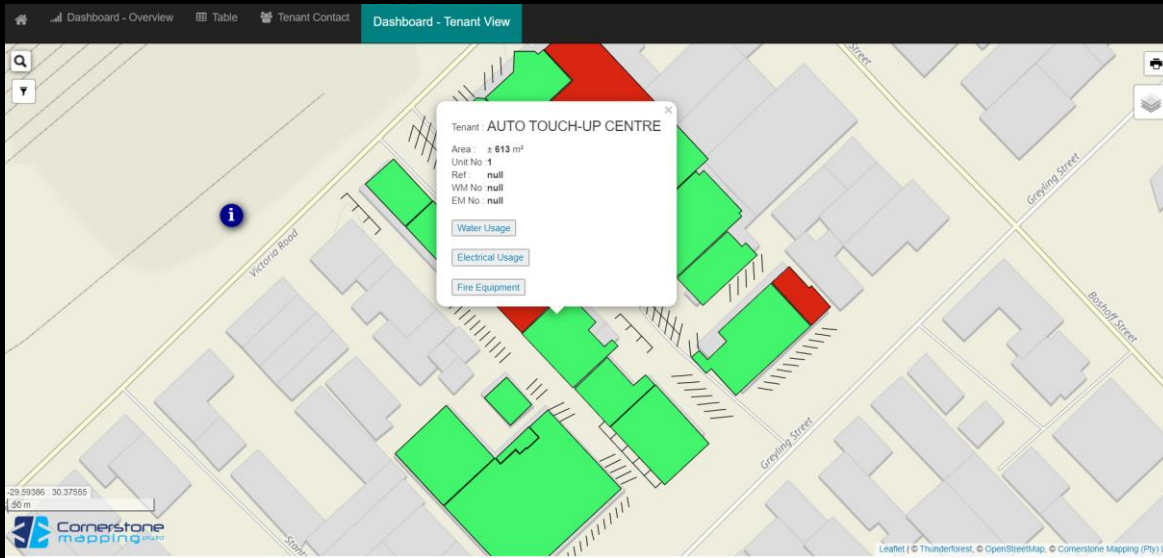


Fig 6-7 : Snapshots of Web Map

Full Package

1. Our Asset Management System comprises all components shown in this document, as well as other advanced features and components.
2. These include a property showcase website that links to all of the components or just that which potential clients should have access to. This will be dependent on login and tiered access.

This system has proven to be an exceptional management enhancement tool, as well as a means to showcase property to clients at their convenience by simply accessing the system through their own devices.

Should you be interested in a live demo or discussion, or just more information, please feel free to contact us at :

info@cornerstonemapping.co.za

or visit our website :

www.cornerstonemapping.co.za

